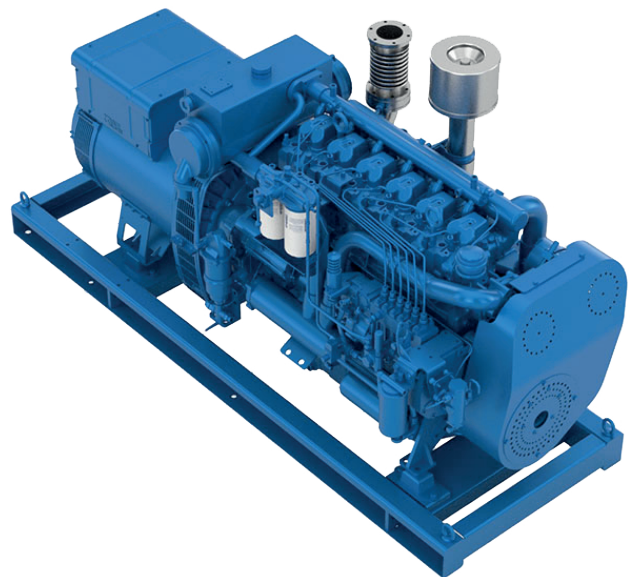
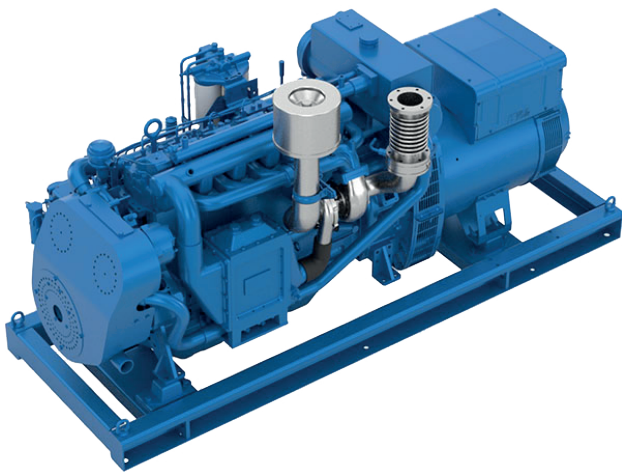


6 W105S Marine Generator Set

Model	Injection	Speed control	Cylinder configuration	Bore/stroke (mm)	Displacement (l)
6 W105S	Mechanical	Electronic	6 in line	105X130	6.75



Rating Table

Rating	Frequency	RPM	kWm	kWe	kVA
PRP	50 Hz	1500	107	100	125
PRP	50 Hz	1500	129	120	150
PRP	60 Hz	1800	116	108	135
PRP	60 Hz	1800	144	135	170

Prime running power (PRP)

- Variable load with mean power calculated on 250 running hours
- No restriction on use if mean power 75% of nominal power
- Total operating time at 100% nominal power shall not exceed 500 hours per year
- 10% overload available 1 hour each 12 hours

Power Definition

Standard ISO 3046/1 - 1995 (F)



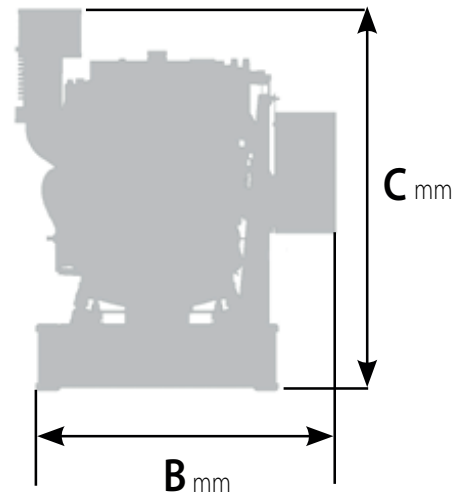
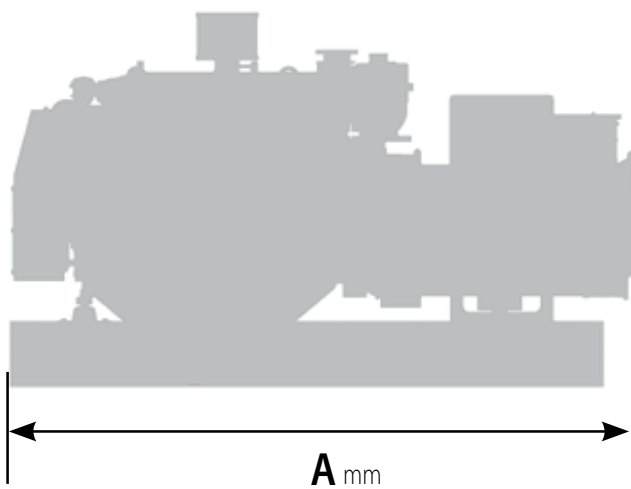
6 W1055

Specific fuel consumption

Frequency	PRP				75% PRP			50% PRP		
	kWe	kWm	g/kWh	l/h	kWm	g/kWh	l/h	kWm	g/kWh	l/h
50 Hz	100	107	199	25	81	203	19	53	258	16
50 Hz	120	129	194	29	97	201	23	75	228	20
60 Hz	108	116	203	28	87	207	21	58	243	16
60 Hz	136	144	200	34	109	202	26	73	218	18

Dimensions and dry weight (mm / kg)

	A	B	C	Weight
125-135 KVA	1991	1044	1130	1231
150-170 KVA	2031	1044	1130	1266



Moteurs Baudouin, reserve the right to modify these specifications, without notice. Document not contractual.